



*Research made easy*

**Labo Baza**

**nowoczesne wyposażenie laboratorium**

ul. Topolowa 5

62-002 Jelonek k/Poznania

tel.: 061 812 57 45

fax: 061 812 57 25

e-mail: [biuro@labobaza.pl](mailto:biuro@labobaza.pl)

[www.labobaza.pl](http://www.labobaza.pl)



**Shakers and Mixers**

# Heidolph – product line Shakers and Mixers

Model	REAX top	REAX control	MULTI REAX	TITRAMAX 100	TITRAMAX 101	TITRAMAX 1000	VIBRAMAX 100	VIBRAMAX 110	ROTAMAX 120
Motion	vibrating	vibrating	vibrating	vibrating	vibrating	vibrating	vibrating	vibrating	orbital
Rotation speed (rpm)	0 - 2500	0 - 2500	150 - 2000	150 - 1350	150 - 1350	150 - 1350	150 - 1350	150 - 2500	20 - 300
Rotation speed setting	analog	electronic contr.	digital	electronic contr.	electronic contr.	electronic contr.	electronic contr.	electronic contr.	electronic contr.
Orbit (mm)	5	5	3	1.5	3.0	1.5	3.0	1.5	20
Angle (°)	-	-	-	-	-	-	-	-	-
Operating mode	automatic or continuous	automatic or continuous	automatic or continuous	timer or continuous	timer or continuous	timer or continuous	timer or continuous	timer or continuous	timer or continuous
Input power (W)	42	42	33	15	15	15	15	15	25
Weight (kg)	3.3	3.3	9.8	5.5	5.5	6.5	5.5	5.0	5.5
Dimensions (wxhxd) (mm)	134 x 105 x 172	134 x 105 x 172	270 x 172 x 410	245 x 125 x 310	245 x 125 x 310	320 x 125 x 375	245 x 125 x 310	245 x 140 x 310	245 x 125 x 310
Platform size (mm)				220 x 220	220 x 220	290 x 258	220 x 220	140 x 140	220 x 220
Included			2 carousel attachments	space for 4 microtiterplates	space for 4 microtiterplates	space for 6 microtiterplates	non-skid rubber mat	non-skid rubber mat	non-skid rubber mat
Max. load capacity (kg)			1.5	2	2	2	2	2	2
Supply voltage*	230/240 V/50 Hz	230/240 V/50 Hz	230/240 V/50 Hz	230/240 V/50 Hz	230/240 V/50 Hz	230/240 V/50 Hz	230/240 V/50 Hz	230/240 V/50 Hz	230/240 V/50 Hz
Overheating protection	self-resetting	self-resetting	self-resetting	self-resetting	self-resetting	self-resetting	self-resetting	self-resetting	self-resetting
Permissible ambient temperature (°C)	5-40 at 85% relative humidity	5-40 at 85% relative humidity	0-50 at 80% relative humidity	0-50 at 80% relative humidity	0-50 at 80% relative humidity	0-50 at 80% relative humidity	0-50 at 80% relative humidity	0-50 at 80% relative humidity	0-50 at 80% relative humidity
Protection class (DIN EN 60529)	IP 22	IP 22	IP 30	IP 30	IP 30	IP 40	IP 30	IP 30	IP 30

Model	UNIMAX 1010	UNIMAX 2010	PROMAX 1020	PROMAX 2020	DUOMAX 1030	POLYMAX 1040	POLYMAX 2040	REAX 2	REAX 20/4 REAX 20/8 REAX 20/12
Motion	orbital	orbital	reciprocating	reciprocating	rocking	wave	wave	overhead	overhead
Rotation speed (rpm)	30 - 500	20 - 400	20 - 250	20 - 400	2 - 50	2 - 50	2.5 - 50	20 - 100	1 - 16
Rotation speed setting	digital	digital	digital	digital	electronic contr.	electronic contr.	digital	analog	electronic contr.
Orbit (mm)	10	20	32	20					
Angle (°)					5/10	5/10	5/10		
Operating mode	timer or continuous	timer or continuous	timer or continuous	timer or continuous	timer or continuous	timer or continuous	timer or continuous		
Input power (W)	30	66	30	66	25	25	66	27	280
Weight (kg)	8.0	16	8.0	16	8.0	8.0	16	5.2	23, 28, 33
Dimensions (wxhxd) (mm)	320 x 125 x 375	426 x 135 x 435	320 x 125 x 375	426 x 135 x 435	320 x 185 x 375	320 x 195 x 375	426 x 208 x 435	510 x 180 x 235	490 x 465 x 520
Platform size (mm)	290 x 258	390 x 340	290 x 258	390 x 340	290 x 258	290 x 258	390 x 340		770 x 465 x 520
Included	non-skid rubber mat	non-skid rubber mat	non-skid rubber mat	non-skid rubber mat	non-skid rubber mat	non-skid rubber mat	non-skid rubber mat		1050x465 x 520
Max. load capacity (kg)	5	10	5	10	5	5	10	2	30
Supply voltage*	230/240 V/50 Hz	230/240 V/50 Hz	230/240 V/50 Hz	230/240 V/50 Hz	230/240 V/50 Hz	230/240 V/50 Hz	230/240 V/50 Hz	230 V / 50 Hz	230 V / 50 Hz
Overheating protection	self-resetting	self-resetting	self-resetting	self-resetting	self-resetting	self-resetting	self-resetting	self-resetting	self-resetting
Permissible ambient temperature (°C)	0-50 at 80% relative humidity	0-50 at 80% relative humidity	0-50 at 80% relative humidity	0-50 at 80% relative humidity	0-50 at 80% relative humidity	0-50 at 80% relative humidity	0-50 at 80% relative humidity	0-40 at 80% relative humidity	0-40 / 80% rel. relative humidity
Protection class (DIN EN 60529)	IP 40	IP 20	IP 40	IP 20	IP 40	IP 40	IP 20	IP 21	IP 21

\* others on request, please specify for order

# Heidolph Shakers and Mixers – Overview

*Research made easy*

## About us

The Heidolph Group of Germany, founded 65 years ago, today employs about 400 people and serves customers in 80 countries worldwide.

Heidolph Instruments offers a modular system for solid & liquid phase reactions along with a comprehensive range of rotary evaporators featuring vacuum pumps and recirculating chillers, overhead stirrers, homogenizers, shakers and mixers, liquid pump systems and magnetic stirrers.

Heidolph Instruments is a leading trademark preferred by research and production facilities of chemical, pharmaceutical, petrochemical, cosmetic, biotechnological, medical industries and universities.

Heidolph products are designed and manufactured to deliver the highest quality available. Heidolph Instruments is DIN ISO 9001:2000 certified.

- **Technical advice and after-sales service provided by our local Heidolph dealers**
- **80 distributors worldwide**
- **24 hour service includes processing inquiries, quotes and technical assistance**
- **World wide reputation**
- **Immediate dispatch**
- **Cutting edge technology**
- **Priority technical service**
- **Excellent safety features**
- **3 year warranty**

## Heidolph Shakers and Mixers – Scope of applications

Heidolph is your first choice for shaking, mixing and heating of small or large wells in biology, microbiology, medical diagnosis and biochemistry.

## Advantages of Heidolph Shakers and Mixers

- Shaking, mixing and heating, all in one
- Models available for vibrating, orbiting, reciprocating, rocking, wave and overhead motions
- Attachment for test tubes, culture plates, media bottles, Erlenmeyer flasks, separatory funnels and available multi-tier attachments
- Individual attachment of your vessel due to universal perforated platforms and clamps
- Insulated motor virtually no platform heat-up
- Encapsulated housing prevents spills and increased performance life
- Process times allows for unattended use and sends an acoustic signal
- Self-resetting overheat protection
- Maintenance free sparkless and brushless motors
- 3 year warranty

## Summary

<b>Product line</b>	3
<b>Modular concept</b>	4
<b>General advantages</b>	5
<b>Test tube shaker vibrating</b>	
Reax top, Reax control	6
Multi Reax	6
<b>Platform shaker vibrating</b>	
Titramax 100, 101, 1000	7
Vibramax 100, 110	8
<b>orbital</b>	
Rotamax 120	9
Unimax 1010, 2010	9
<b>reciprocating</b>	
Promax 1020, 2020	10
<b>rocking</b>	
Duomax 1030	11
<b>wave</b>	
Polymax 1040, 2040	12
<b>Overhead shaker</b>	
Reax 2, Reax 20/4, 20/8, 20/12	13
<b>Incubator 1000</b>	
Heating module	14
Incubator hood flat, high	15
<b>Accessories</b>	16/17
<b>Complete package</b>	18







# Modular Concept

Most advanced technology to date

# Heidolph Shakers and Mixers

Always one step ahead

## Your benefits

-  The modular concept consists of one shaker, one heating module and your choice of a flat or high incubator hood
-  Incubators can be combined with shakers of all specific motions at any time
-  No contamination of your well, due to convection based heating system
-  All components are designed to function together
-  High efficiency with limited space requirements
-  Complete system available from one manufacturer

## General Advantages

- ... of Heidolph Shakers and Mixers
- Shaking, mixing and heating, all in one
- Various models from test tube shakers to large platform shakers
- Choose from 6 specific motions, from one to three dimensional movements
- Three platform sizes and load capacities: 2 kg up to 10 kg
- Modular system including the Incubator 1000 with your choice of a flat or high incubator hood
- Large range of flask attachments for all common vessels

### For your safety:

- Insulated platform with virtually no heat-up
- Designed for continuous operation
- Maintenance free sparkless and brushless motors
- Heidolph shakers are CE marked and comply with EMC and low voltage regulations
- High quality and long service life
- 3 year warranty

Incubator

Page 14 - 15

Accessories

Page 16 - 17

Shakers and Mixers

Page 5 - 15



# Heidolph Shakers and Mixers

## Test tube shaker - vibrating

### General Advantages

- Vibrating motion continuously adjustable up to 2,500 rpm
- 3 different models
- Various accessories for test tubes and multiple tubes

### REAX

- Vibration orbit of 5 mm
- Switch easily from continuous mode to automatic mode
- High stability
- Plate for 20 mm diameter test tubes included
- Protection class IP 22

#### REAX top

##### Standard test tube shaker

- Test tube shaker with all above mentioned advantages
- Features analog dial speed control
- Vibration frequency up to 2,500 rpm

#### REAX control

##### Constant vibration under changing loads

- Test tube shaker with all above mentioned advantages
- Features electronic speed control
- Vibration frequency up to 2,500 rpm

### MULTI REAX

#### Unique shaker to accommodate up to 26 vessels with various diameters

- Vibration orbit of 3 mm
- Vibration frequency to 2,000 rpm
- Digital speed setting
- Digital process timer allows for unattended operation up to 999 minutes and sends an acoustic signal
- Delivery includes 2 carousel attachments:
  - Carousel up to 26 test tubes (Ø 10-16 mm)
  - Carousel up to 12 test tubes (Ø 16-32 mm)
- Contact us for customized test tube attachments
- Protection class IP 30

#### MULTI REAX

P/N 545-10000-00

Accessories: Category H



#### REAX top (not shown)

P/N 541-10000-00

#### REAX control

P/N 541-11000-00

Accessories: Category A



# Heidolph Shakers and Mixers

## Platform shaker - vibrating

### General Advantages

- Vibrating motion continuously adjustable up to 1,350 rpm
- 5 platformshakers for up to 2 kg
- Vibration orbit of 1.5 mm guarantees no spills even with full vessels
- Vibration orbit of 3 mm for best mixing results even with smallest quantities
- Full range attachments for all common vessels, such as tension roller attachments for test tubes

### Titramax

- Vibration frequency from 150 to 1,350 rpm
- Analog dial controls for vibration frequency
- Process timer allows for unattended operation up to 120 minutes and sends an acoustic signal
- Insulated motor, virtually no platform heat up

#### Titramax 100

##### 4 Microtiterplates - small orbit

- Small vibration orbit of 1.5 mm to prevent contamination even with full wells
- Protection class IP 30

#### Titramax 101

##### 4 Microtiterplates - large orbit

- Large vibration orbit of 3 mm for best mixing results even with small quantities
- Protection class IP 30

#### Titramax 1000

##### 6 Microtiterplates - small orbit

- Small vibration orbit of 1.5 mm to prevent contamination even with full wells
- Can be integrated into the incubator 1000 for reproducible temperature control
- Ability to combine this shaker with the Incubator 1000
- Protection class IP 40



#### Titramax 101

P/N 544-11300-00

#### Titramax 100 (not shown)

P/N 544-11200-00



#### Titramax 1000

P/N 544-12200-00

# Heidolph Shakers and Mixers

## Platform shaker - vibrating

### Vibramax

- Designed for vibrating test tubes or other vessels
- Analog dial controls for vibration frequency
- Process timer allows for unattended operation up to 120 minutes and sends an acoustic signal
- Insulated motor, virtually no platform heat up
- Comes with non-skid rubber mat
- Protection class IP 30

#### Vibramax 100

##### Tension roller, large orbit

- Vibration frequency from 150 to 1,350 rpm
- Large vibration orbit of 3 mm for best mixing results even with small quantities

#### Vibramax 110

##### Test tube attachment, small orbit

- Vibration frequency from 150 to 2,500 rpm
- Small vibration orbit of 1.5 mm to prevent contamination even with full wells



**Vibramax 100**  
P/N 544-21200-00  
Accessories: Category B



**Vibramax 110**  
P/N 544-31200-00  
Accessories: Category C



**Unimax 2010**  
P/N 542-10020-00  
Accessories: Category E

# Heidolph Shakers and Mixers

## Platform shaker - orbital

### General Advantages

- Two dimensional motion continuously adjustable from 20 to 500 rpm
- 3 models for load capacities of 2 kg, 5 kg and 10 kg
- Best results for gentle movement in round culture plates and Erlenmeyer flasks up to 1000 ml
- Attachments and clamps for up to 36 Erlenmeyer flasks available
- Comes with non-skid rubber mat

### Rotamax

#### Rotamax 120

##### Maximum load capacity of 2 kg

- Vibration orbit of 20 mm for gentle circles
- Rotation continuously adjustable from 20 to 300 rpm
- Analog dial controls for vibration frequency
- Designed for culture plates and Erlenmeyer flasks up to 250 ml
- Process timer allows for unattended operation up to 120 minutes and sends an acoustic signal
- Protection class IP 30



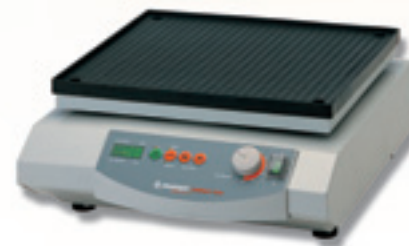
**Rotamax 120**  
P/N 544-41200-00  
Accessories: Category B

### Unimax

#### Unimax 1010

##### Maximum load capacity of 5 kg

- Vibration orbit of 10 mm for gentle circles
- Rotation continuously adjustable from 30 to 500 rpm
- Designed for medium sized vessels
- Analog dial controls for vibration frequency
- Digital process timer allows for unattended operation up to 999 minutes and sends an acoustic signal
- Ability to combine this shaker with the Incubator 1000
- Protection class IP 40



**Unimax 1010**  
P/N 543-12310-00  
Accessories: Category D

#### Unimax 2010

##### Maximum load capacity of 10 kg

- Vibration orbit of 20 mm for gentle circles
- Rotation continuously adjustable from 20 to 400 rpm
- Analog dial controls for vibration frequency
- Process timer allows for unattended operation up to 120 minutes and sends an acoustic signal
- Protection class IP 20

# Heidolph Shakers and Mixers

## Platform shaker - reciprocating

### General Advantages

- One dimensional motion continuously adjustable up to 400 rpm
- 2 models for load capacities of 5 kg and 10 kg
- Best results with separatory funnels and media bottles
- Best results with common standard vessels
- Attachments and clamps for up to 4 separatory funnels available
- Attachments and clamps for Erlenmeyer flasks available
- Comes with non-skid rubber mat
- Protection class IP 20

### Promax

#### Promax 1020

##### Maximum load capacity of 5 kg

- Shaking orbit of 32 mm
- Speed continuously adjustable from 20 to 250 rpm
- Analog dial controls for reciprocating frequency
- Digital process timer allows for unattended operation up to 999 minutes and sends an acoustic signal
- Ability to combine this shaker with the Incubator 1000

#### Promax 2020

##### Maximum load capacity of 10 kg

- Shaking orbit of 20 mm
- Speed continuously adjustable from 20 to 400 rpm
- Analog dial controls for reciprocating frequency
- Process timer allows for unattended operation up to 120 minutes and sends an acoustic signal



**Promax 1020**  
P/N 543-22332-00  
Accessories: Category D



**Promax 2020**  
P/N 542-20020-00  
Accessories: Category E

# Heidolph Shakers and Mixers

## Platform shaker - rocking

### General Advantages

- One dimensional motion continuously adjustable up to 50 rpm
- For homogeneous mixing without creating undesirable disturbances, 5 and 10 angles of degree are available
- Best results with media bottles and common standard vessels
- Also available with attachment for Erlenmeyer flasks



**Duomax 1030**  
P/N 543-32205-00 · angle 5°  
P/N 543-32210-00 · angle 10°  
Accessories: Category D

### Duomax

#### Duomax 1030

##### Platform tilts to an angle of 5° or 10°

- Speed continuously adjustable from 2 to 50 rpm
- Maximum load capacity of 5 kg
- Designed for flasks, media bottles and large vessels
- Analog dial controls for rocking frequency
- Process timer allows unattended operation up to 120 minutes and sends an acoustic signal
- Comes with non-skid rubber mat
- Ability to combine this shaker with the Incubator 1000
- Protection class IP 40

# Heidolph Shakers and Mixers

## Platform shaker - wave

### General Advantages

- Three dimensional motion continuously adjustable up to 50 rpm
- For optimum distribution of cells or solutes, two different angles of inclination are available
- 2 models for load capacities of 5 kg and 10 kg
- Best results with culture plates and Erlenmeyer flasks
- Good results with common standard vessels
- Attachment for separatory funnels available
- Analog dial controls for wave frequency adjustment
- Process timer allows for unattended operation up to 120 minutes and sends an acoustic signal
- Comes with non-skid rubber mat

### Polymax

#### Polymax 1040 Ability to combine this shaker with the Incubator 1000

- Speed continuously adjustable from 2 to 50 rpm
- Maximum load capacity of 5 kg
- Rotates at an 5° or 10° angle of inclination
- Designed for small vessels and culture plates
- Protection class IP 40

#### Polymax 2040 Large platform

- Speed continuously adjustable from 2.5 to 50 rpm
- Maximum load capacity of 10 kg
- Rotates at an 5° or 10° angle of inclination
- Designed for large vessels and culture plates
- Protection class IP 20



**Polymax 1040**  
P/N 543-42205-00 · angle 5°  
P/N 543-42210-00 · angle 10°  
Accessories: Category D



**Polymax 2040**  
P/N 542-40005-00 · angle 5°  
P/N 542-40010-00 · angle 10°  
Accessories: Category E

# Heidolph Shakers and Mixers

## Overhead shaker

### General Advantages

- One dimensional swirling action continuously adjustable from 1 to 100 rpm
- Complies with DIN 38414 Item 4 „determination of elutriation with water“
- 4 different models available for 2 bottles, 4 bottles, 8 bottles and 12 bottles
- Comes with attachments for your choice of two liter, one liter or 0.5 liter bottles
- Attachments for smaller vessels also available
- Designed for continuous use
- Encapsulated housing prevents spills and increased performance life
- Maintenance free sparkless and brushless motors

### Reax 2

#### For common vessels

- Speed continuously adjustable from 20 to 100 rpm
- Superior in hematology, medical diagnostics, materials testing and biochemistry
- Analog dial controls for rpm adjustment
- Comes with easy-to-change universal adapter for the use of various vessels
- Adapter for the use of 20 test tubes at the same time (Accessory)
- Comes with non-skid rubber mat
- Protection class IP 21



**Reax 2**  
P/N 541-21001-00  
Accessories: Category F

### Reax 20/4 · 20/8 · 20/12

#### For 4, 8 or 12 bottles

- Speed continuously adjustable from 1 to 16 rpm
- Also speed ranges of 0.5 - 8 rpm and 2 - 32 rpm available
- Analog dial controls for rpm adjustment
- Easy and fast attachment of bottles
- Comes with attachment for 2 liter bottles
- Attachment for bottle sizes of 0.5 liters and 1 liter available
- Other vessels of 270 mm height and max diameter of 136 mm can be fixed with a tension plate
- Protection class IP 21

#### Reax 20/8 · for 8 bottles

specifications see above

#### Reax 20/12 · for 12 bottles

specifications see above



**Reax 20/8**  
P/N 541-20008-00  
**Reax 20/4 (not shown)**  
P/N 541-20004-00  
**Reax 20/12 (not shown)**  
P/N 541-20012-00  
Accessories: Category G



# Heidolph Incubators

## Incubator 1000

### General Advantages

- World-wide unique modular incubator for Shaking-Mixing and Heating all in one
- For superior results in molecular biology, bacteria cultivation and DNA analysis
- Your choice of a flat or high incubator hood for high or small vessels
- Separately controlled heating module for reproducible temperature control
- Incubate and mix simultaneously or independently
- Transparent non-fogging PETG hood allows for easy viewing
- Easy and fast access to vessels
- Compatible with shaker models Unimax 1010, Promax 1020, Duomax 1030, Polymax 1040 and Titramax 1000

### Heating module

#### Shaking-heating-mixing all in one

- Electrical heater along with a low-noise blower
- Heating power 300 W
- Digital temperature settings from + 5 °C over room temperature to 65 °C
- Temperature accuracy of  $\pm 2$  K up to 50 °C
- Temperature accuracy of  $\pm 4$  K over 50 °C
- Individual digital display for set temperature and actual temperature
- Temperature regulation with Pt 100 sensor
- Safety circuits prevent overheating
- Designed for continuous use
- Dimensions 170 x 97 x 375 mm
- Protection class IP 30



Heating module  
P/N 549-90010-00

# Heidolph Incubators

## Incubator 1000

### Flat hood

#### For small vessels and culture plates

- Flat incubator hood with total height of 163 mm
- Transparent, non-fogging PETG material for easy viewing
- Immediate and convenient access to vessels
- Recommended especially for microtiter plates, culture plates, small flasks, media bottles and Erlenmeyer flasks up to 100 ml



Application sample:  
Titramax 1000 + heating module + flat hood



Flat hood  
P/N 549-90040-00

### Large hood

#### For high vessels and flasks

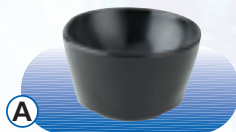
- High incubator hood with total height of 267 mm
- Transparent, non-fogging PETG material for easy viewing
- Immediate and convenient access to vessels
- Recommended especially for large flasks and media bottles, Erlenmeyer flasks up to 1000 ml and medium sized or large common vessels



High hood  
P/N 549-90030-00

# Heidolph Shakers and Mixers

## Accessories



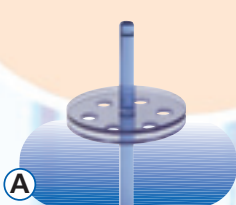
**A** **Test tube tray, large**  
for test tubes and flasks up to 50 ml  
P/N 549-19000-00



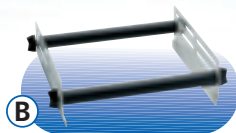
**A** **Test tube holding device**  
Attachment to hold one test tube safe and secure for continuous shaking  
P/N 549-20000-00



**A** **Attachment for 10 test tubes**  
Foam attachment provides space for 10 test tubes for simultaneously mixing with just one shaker  
P/N 549-01000-00



**A** **Test tube stand**  
for up to 6 Eppendorf vessels (1.5 ml)  
P/N 549-04000-00



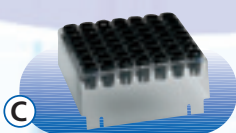
**B** **Tension rollers**  
Attachment with 2 tension rollers  
P/N 549-81000-00



**B** **Spare tension roller**  
1 tension roller for attachment  
P/N 549-81000-00  
P/N 11-008-007-08



**B** **Tablar 100 Perforated platform**  
Universal perforated platform allows for individual arrangements of vessels  
P/N 549-59100-00



**C** **Test tube attachment**  
for up to 49 test tubes with Ø 12 mm, length up to 80 mm  
P/N 549-82000-00  
for up to 36 test tubes with Ø 16 mm, length up to 80 mm  
P/N 549-83000-00



**D** **25 ml Erlenmeyer attachment**  
Attachment for up to 22 Erlenmeyer flasks with a size of 25 ml  
P/N 549-72000-00



**D** **50 ml Erlenmeyer attachment**  
Attachment for up to 14 Erlenmeyer flasks with a size of 50 ml  
P/N 549-73000-00



**D** **100 ml Erlenmeyer attachment**  
Attachment for up to 9 Erlenmeyer flasks with a size of 100 ml  
P/N 549-74000-00



**D** **250 ml Erlenmeyer attachment**  
Attachment for up to 5 Erlenmeyer flasks with a size of 250 ml  
P/N 549-75000-00



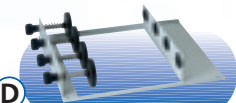
**D** **500 ml Erlenmeyer attachment**  
Attachment for up to 4 Erlenmeyer flasks with a size of 500 ml  
P/N 549-76000-00



**D** **1000 ml Erlenmeyer attachment**  
Attachment for up to 2 Erlenmeyer flasks with a size of 1000 ml  
P/N 549-77000-00



**D** **Tablar 1000 Perforated platform**  
Universal perforated platform allows for individual arrangements of vessels  
P/N 549-59200-00



**D** **Separatory funnel attachment**  
Attachment for 4 separatory funnels (50 ml, conical) or 4 separatory funnels (100 ml, conical)  
P/N 549-78000-00

# Heidolph Shakers and Mixers

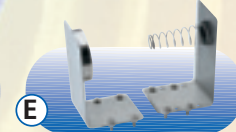
## Accessories



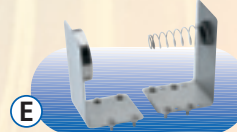
**D** **Frame with tension roller**  
Attachment with 2 tension rollers  
P/N 549-70000-00



**D** **Spare tension roller**  
1 tension roller for accessory  
P/N 549-70000-00  
P/N 549-71000-00



**E** **Separatory funnel clamp, 3 sizes** 250 ml, 500 ml, 1000 ml separatory funnel clamp for the perforated platform, space for max 4 (250 ml), 3 (500 ml) and 3 (1000 ml) clamps  
P/N 549-57000-00



**E** **2000 ml separatory funnel clamp** 2000 ml separatory funnel clamp for the perforated platform (space for max 2 clamps)  
P/N 549-61000-00



**E** **Tablar 2000 Perforated platform**  
Universal perforated platform allows for individual arrangements of vessels  
P/N 549-59000-00



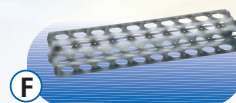
**E** **Frame tension roller**  
Frame without tension roller  
P/N 549-50000-00



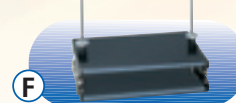
**E** **Tension roller**  
1 tension roller for the frame  
P/N 549-50000-00  
P/N 549-58000-00



**E** **Multi-tier attachment**  
Includes Tablar 2000 and 4 supporting rods  
P/N 549-62000-00



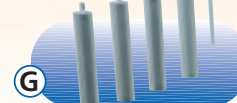
**F** **Adapter for 20 test tubes**  
Allows for simultaneously mixing 20 test tubes Ø 10-18 mm with just one shaker  
P/N 549-21000-00



**F** **Universal adapter**  
Allows for using common vessels and test tube racks  
P/N 549-30000-00



**G** **Attachment for 1 l bottles**  
(Set of 4) Allows for the use of four 1 liter bottles  
P/N 549-26000-00



**G** **Attachment for 0.5 l bottles**  
(Set of 4) Allows for the use of four 0.5 l bottles  
P/N 549-27000-00



**G** **Tension plate with caps**  
Allows for the use of common bottles with Ø 94 mm  
P/N 11-001-001-81



**H** **Carousel attachment for up to 26 test tubes**  
(Ø 10-16 mm, length 160 mm)  
P/N 549-01600-00



**H** **Carousel attachment for up to 12 test tubes**  
(Ø 16-32 mm, length 120 mm)  
P/N 549-03000-00

### Accessories for:

- A** Reax top/control
- B** Vibramax 100, Rotamax 120
- C** Vibramax 110
- D** Unimax 1010, Duomax 1030, Polymax 1040, Promax 1020

- E** Unimax 2010, Promax 2020, Polymax 2040
- F** Reax 2
- G** Reax 20/4 · 20/8 · 20/12
- H** Multi Reax



### Clamp for the perforated platform

	Size 1 for 25 ml Erlenmeyer flasks	Size 2 for 50 ml Erlenmeyer flasks	Size 3 for 100 ml Erlenmeyer flasks	Size 4 for 250 ml Erlenmeyer flasks	Size 5 for 500 ml Erlenmeyer flasks	Size 6 for 1000 ml Erlenmeyer flasks
<b>P/N</b>	549-51000-00	549-52000-00	549-53000-00	549-54000-00	549-55000-00	549-56000-00
<b>for tablar 100</b>	max. 16	max. 16	max. 8	max. 5	max. 3	max. 2
<b>for tablar 1000</b>	max. 20	max. 20	max. 14	max. 8	max. 4	max. 4
<b>for tablar 2000</b>	max. 36	max. 36	max. 23	max. 12	max. 9	max. 5

# Heidolph Complete Packages

## Packages at a special price

### Package Titramax

**Package includes:**

- Vibrating platform shaker, Titramax 1000
- Heating module Incubator 1000
- Flat incubator hood

**Package Titramax**  
P/N 544-12209-00



### Package Unimax

**Package includes:**

- Orbital platform shaker, Unimax 1010
- Heating module Incubator 1000
- High incubator hood

**Package Unimax**  
P/N 543-12319-00



## Call or write for free service

- application information
- reference list
- trials or demonstrations
- literature

### Labo Baza

**nowoczesne wyposażenie laboratorium**

ul. Topolowa 5

62-002 Jelonek k/Poznania

tel.: 061 812 57 45

fax: 061 812 57 25

e-mail: [biuro@labobaza.pl](mailto:biuro@labobaza.pl)

**[www.labobaza.pl](http://www.labobaza.pl)**



**Heidolph Instruments GmbH & Co. KG**

Walpersdorfer Str. 12 · 91126 Schwabach/Germany

Tel. (+49) 0 91 22 - 99 20 68 · Fax - 99 20 65

[sales@heidolph.de](mailto:sales@heidolph.de) · [www.heidolph.com](http://www.heidolph.com)

Subsidiary: New Jersey, USA



**[www.heidolph.com](http://www.heidolph.com)**